

Task Analysis and User Flow

Cassie Castrejon

Task Analysis:

Primary Task: Create new Vocabulary Card

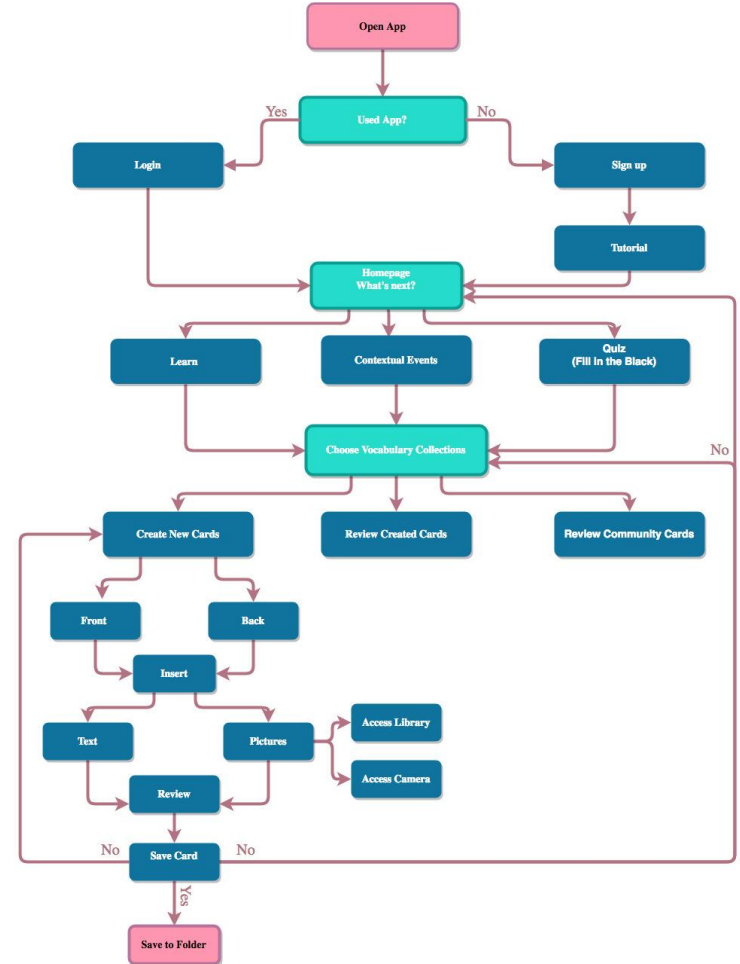
Entry Point: open app

Success Criteria: create new vocabulary card

1. Open App
2. Used app before?
 - a. If yes → Log In
 - b. If no → Sign Up → Tutorial
3. Homepage - What's next?
 - a. Learn
 - b. Contextual Events
 - c. Quiz - Fill in the Blank
4. Choose Vocabulary Collection
 - a. Create New Cards
 - b. Review Created Cards
 - c. Review Community Cards
5. Create New Cards
 - a. Front of Card
 - b. Back of Card
6. Insert
 - a. Text
 - i. Access Library
 - ii. Access Camera
 - b. Picture
7. Review card
8. Save Card
 - a. Yes, save card to folder
 - b. No, create new card
 - c. No, choose from vocabulary collections
 - d. No, go back to homepage
9. Save newly created card to folder

Success: New vocabulary word created and saved in folder!

User Flow:



Task Analysis:

Secondary Task : review historical/current event to gain contextual understanding of vocabulary Word

Entry Point: contextual events

Success Criteria: save contextual event relating to vocabulary word to folder

1. Contextual Events
2. Choose from Vocabulary Collections
 - a. Create New Cards
 - b. Created Cards
 - c. Community Cards
3. Select Time
 - a. Historical Events
 - b. Current Events
4. Save Contextual Event
 - a. Yes, save to contextual events folder
 - b. No, choose contextual event
 - c. No, choose vocabulary collections
5. Save to Contextual Events Folder

Success: New contextual event relating to vocabulary word of choice saved to folder!

User Flow:

